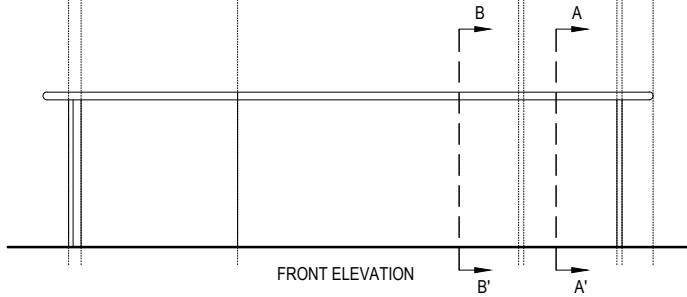
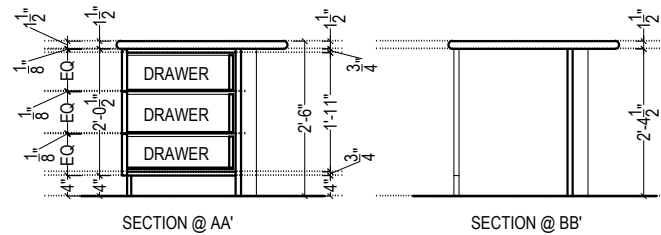


BOTTOM PLAN

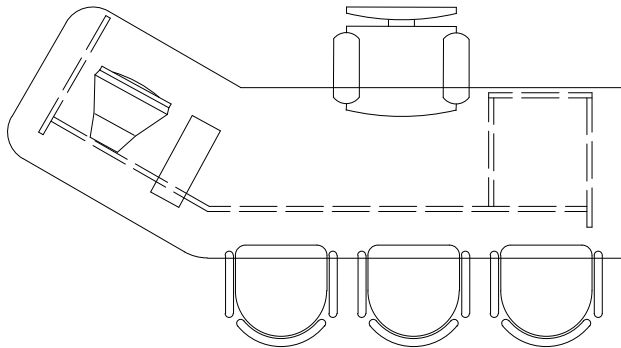


FRONT ELEVATION



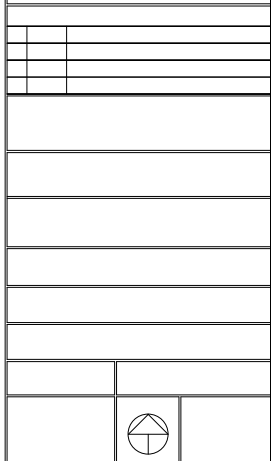
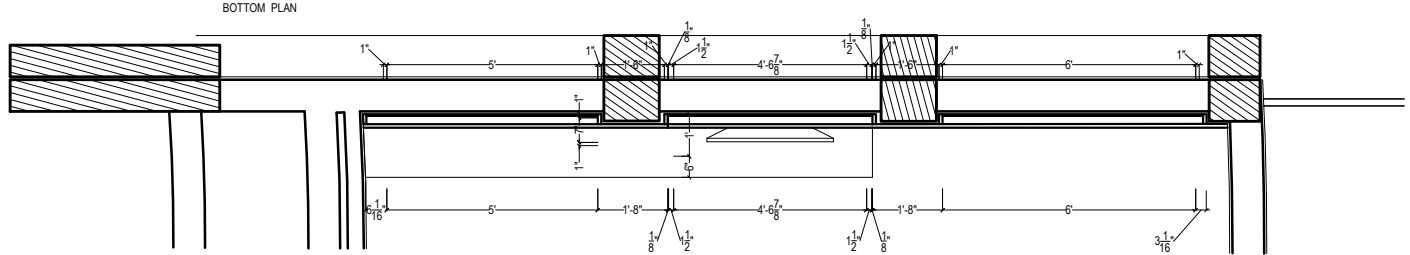
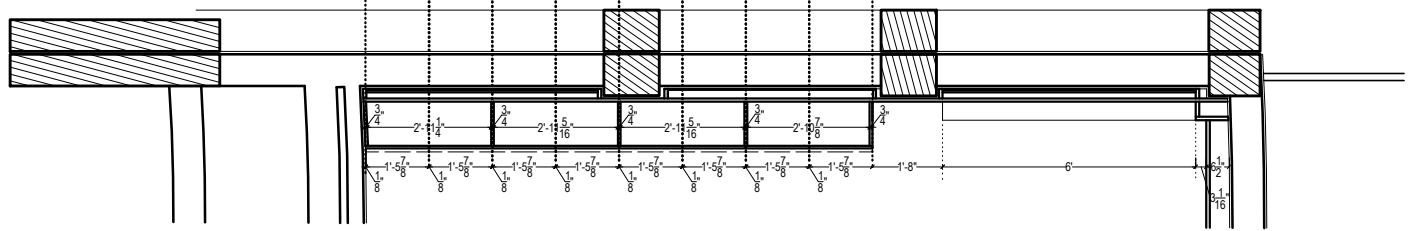
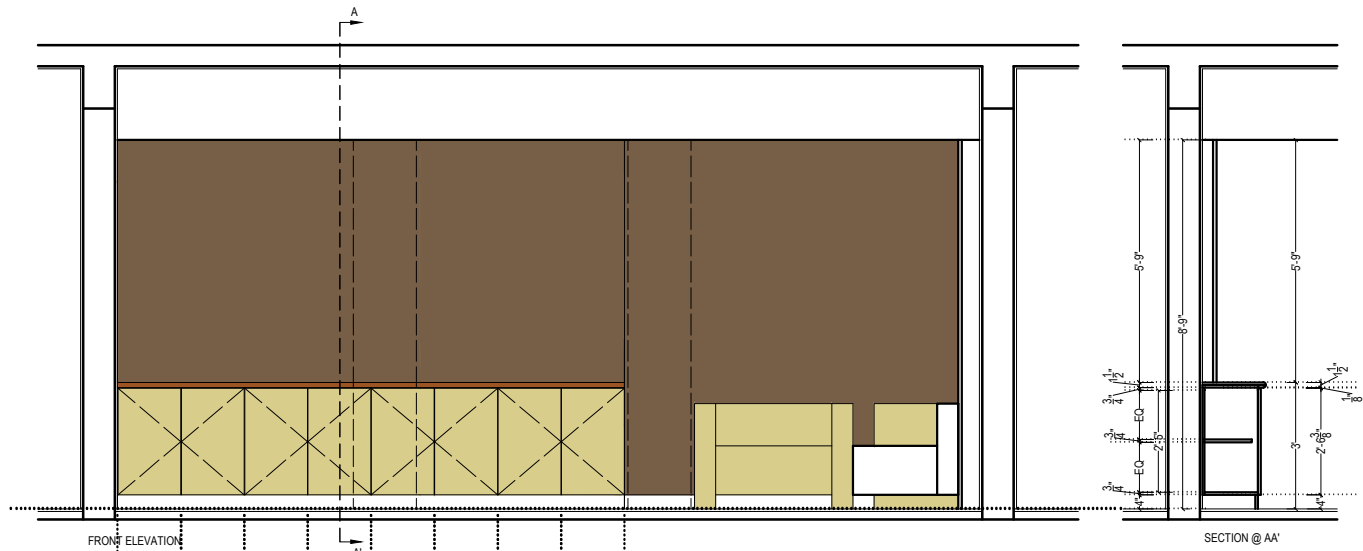
SECTION @ AA'

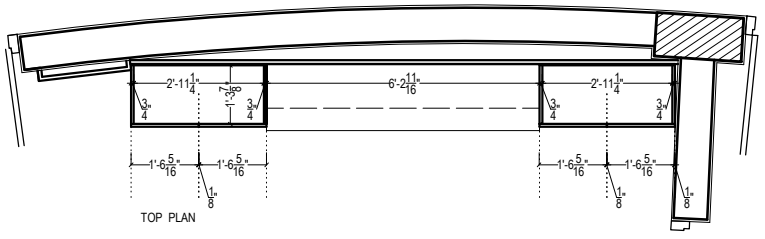
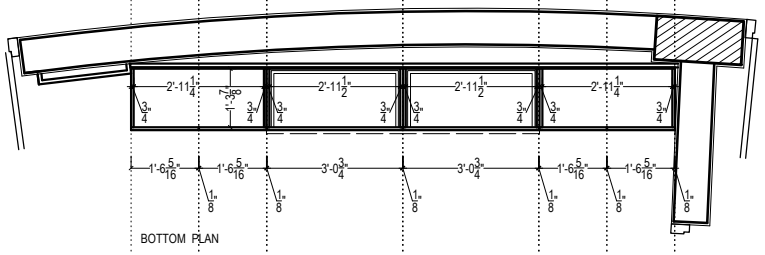
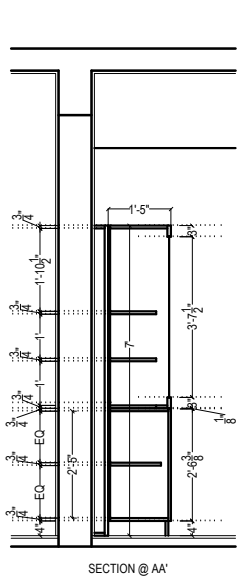
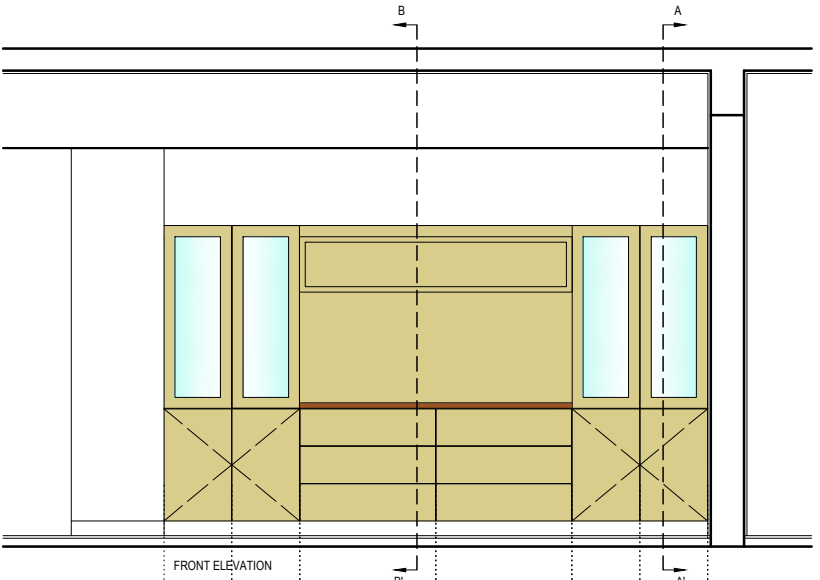
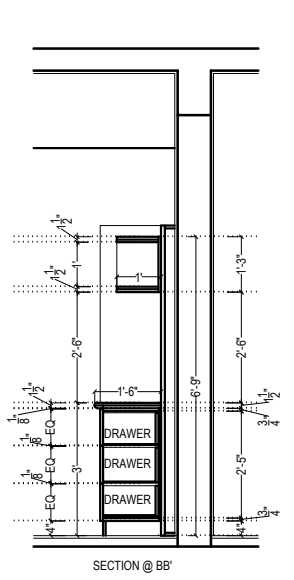
SECTION @ BB'



TOP PLAN

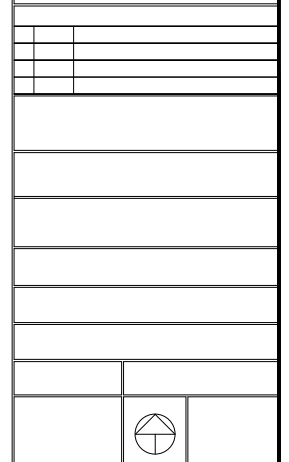
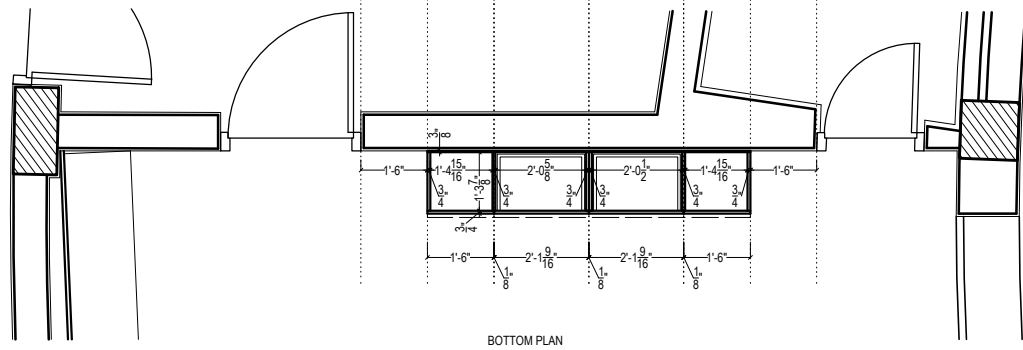
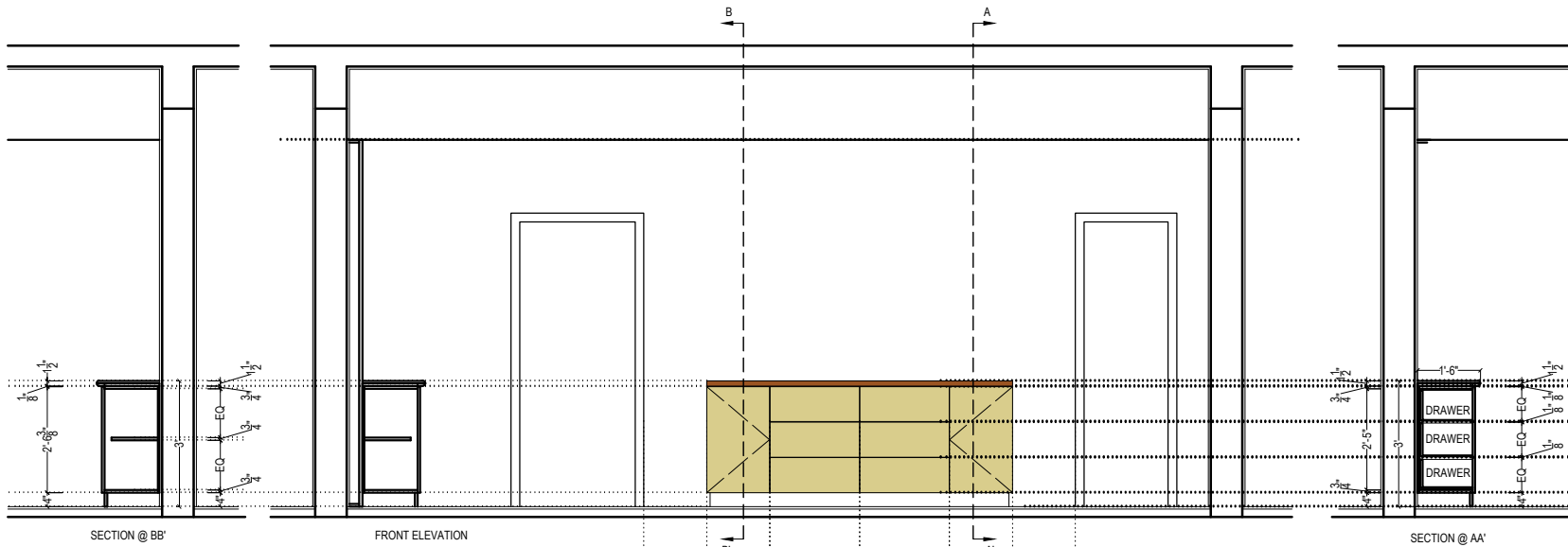
SUBJECT	
DRAWING TITLE :-	
DRG.No.	



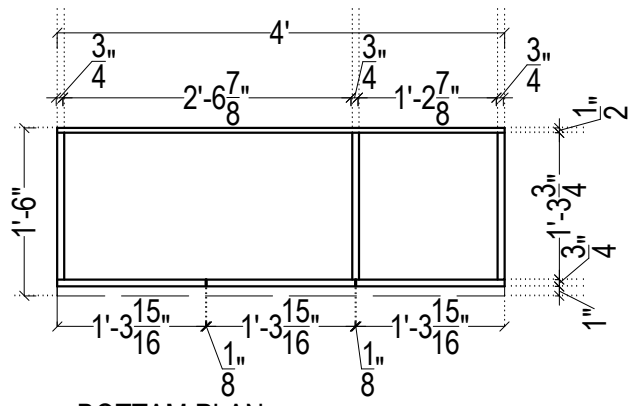


REVISIONS	

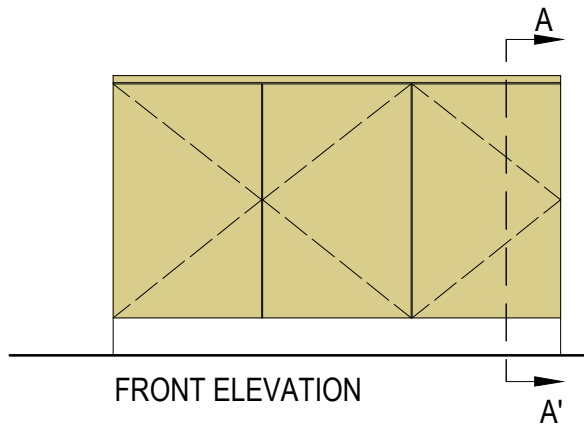




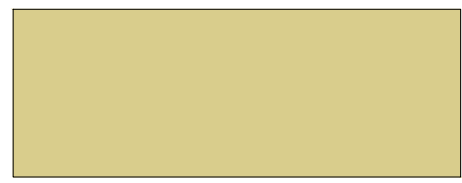




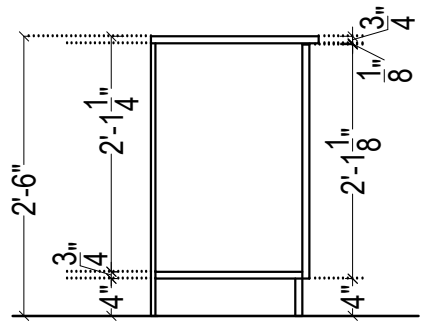
BOTTOM PLAN



FRONT ELEVATION



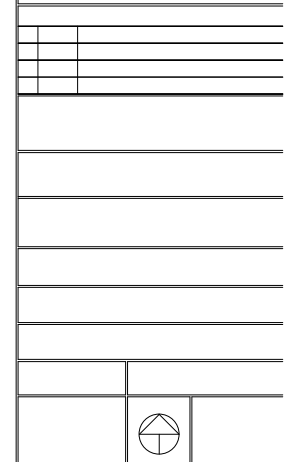
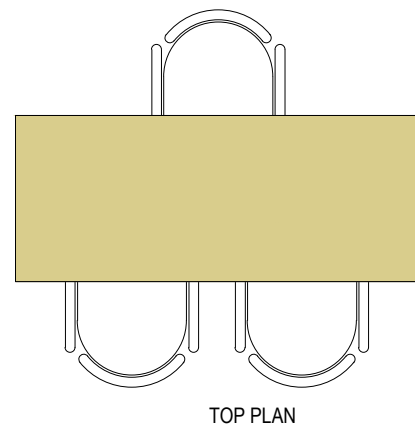
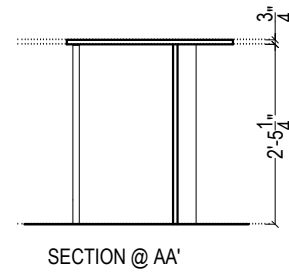
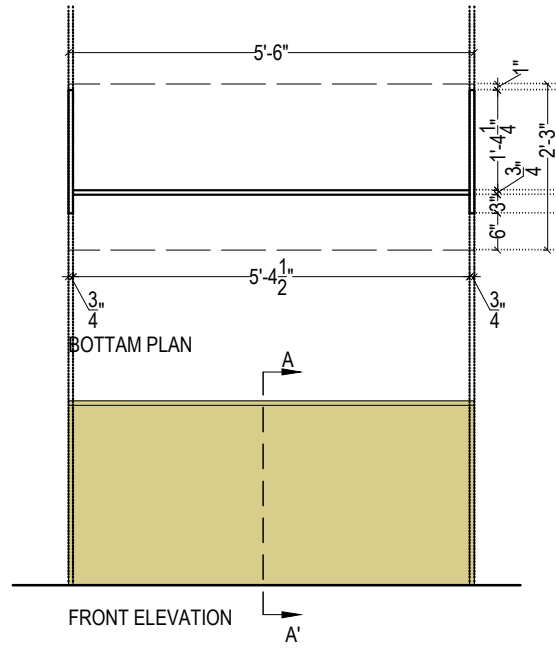
TOP PLAN

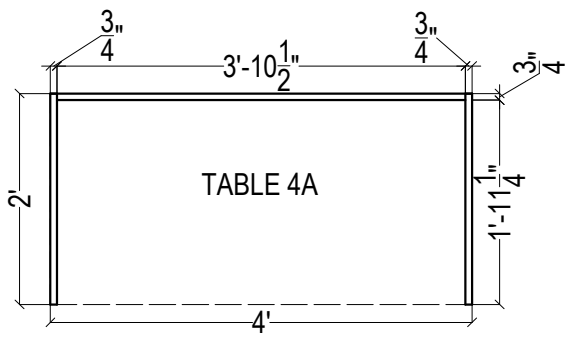


SECTION @ AA'

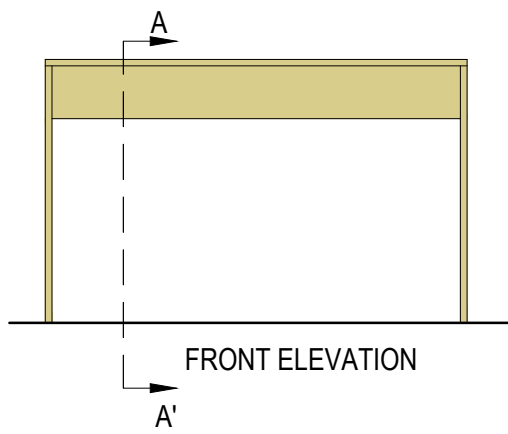
REVISIONS	



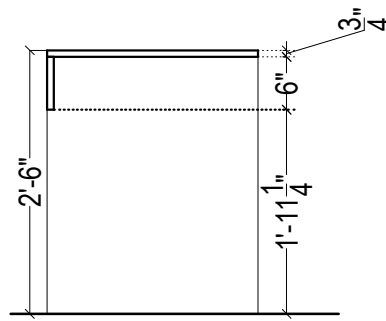




BOTTAM PLAN



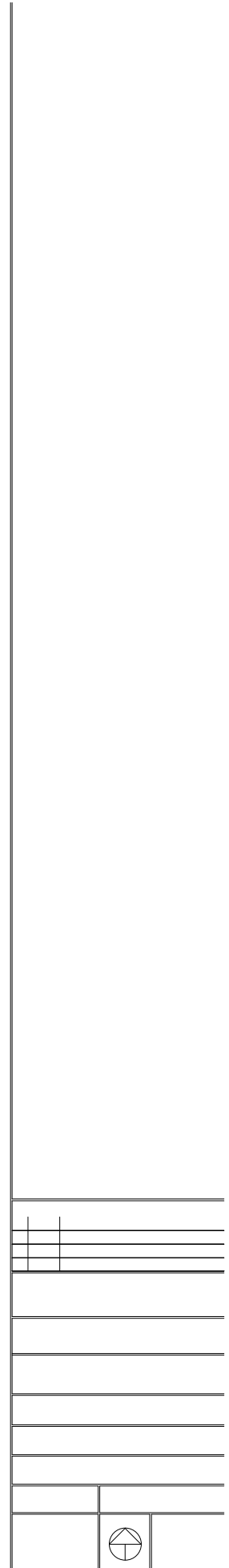
FRONT ELEVATION



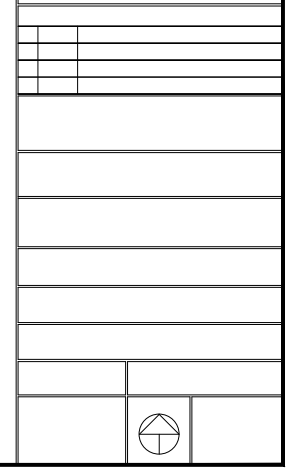
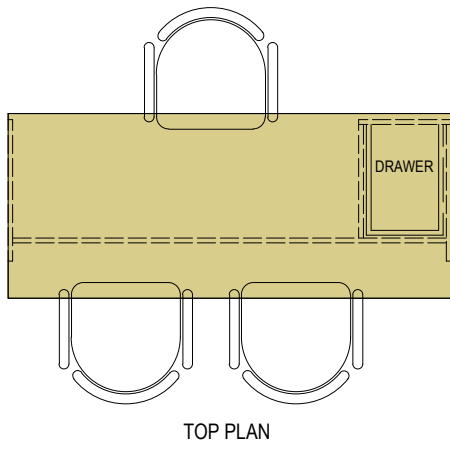
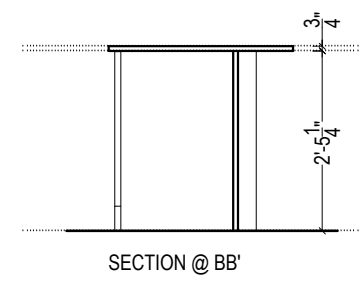
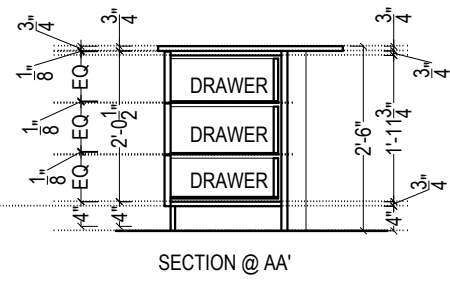
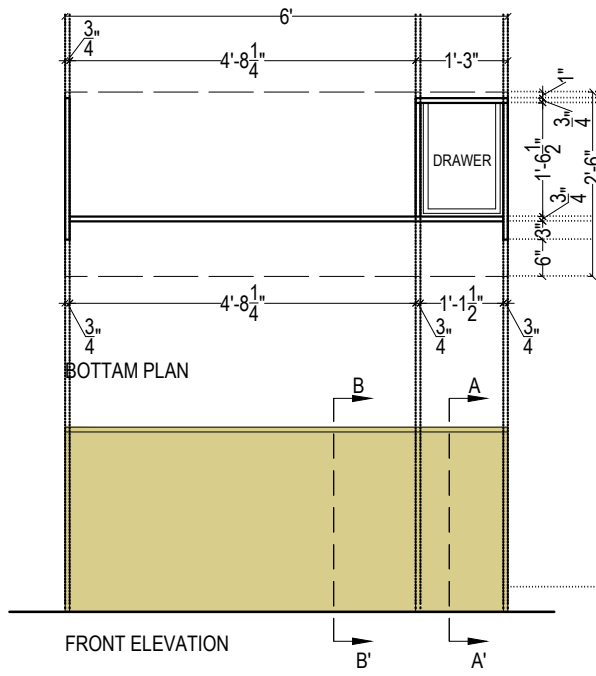
SECTION @ AA'

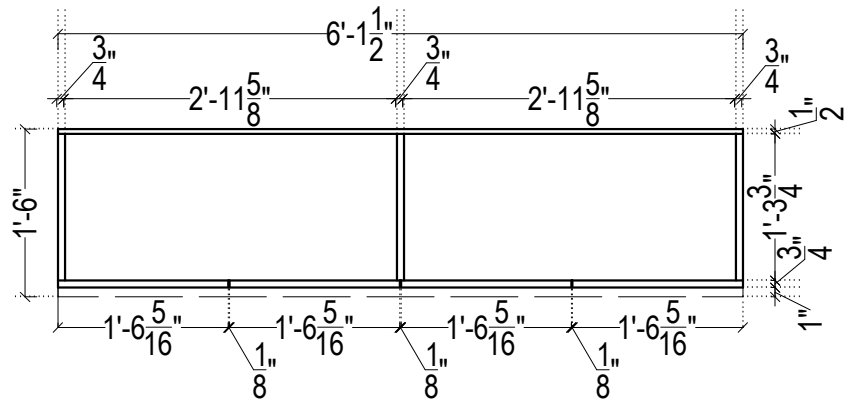


TOP PLAN

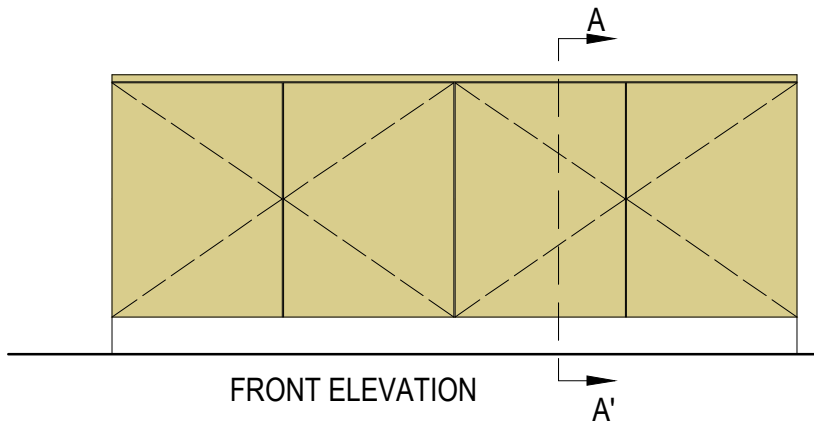




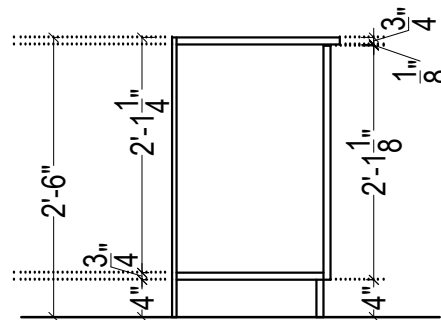




BOTTOM PLAN



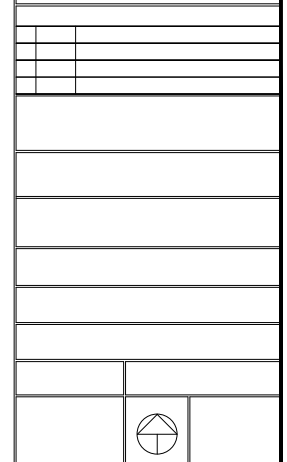
FRONT ELEVATION



SECTION @ AA'

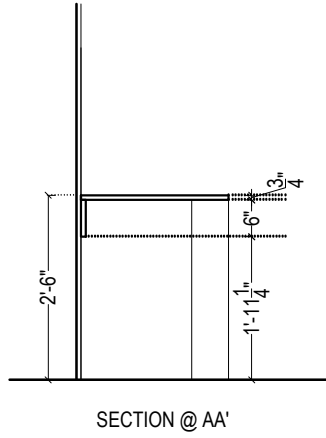
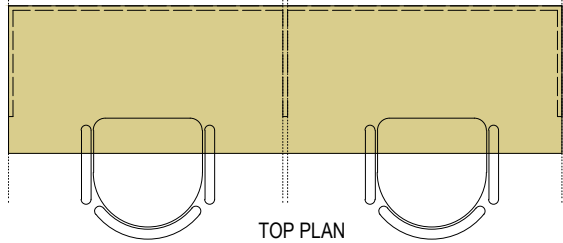
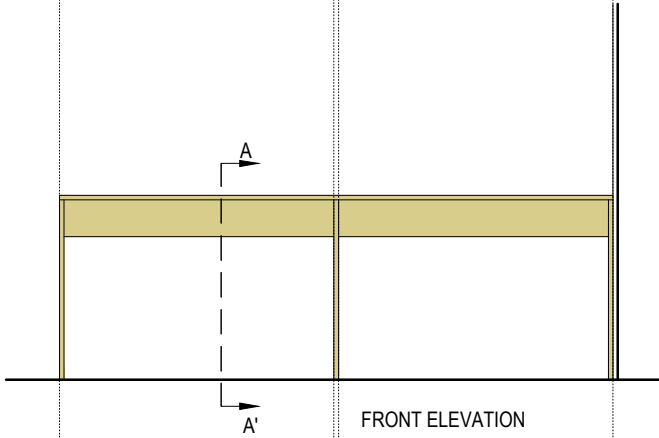
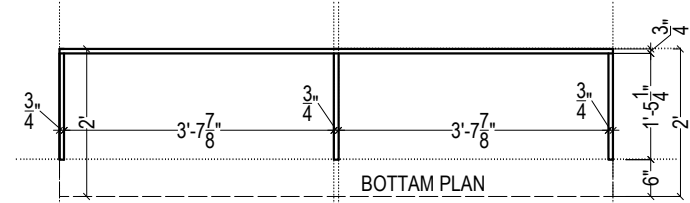


TOP PLAN










REVISIONS	





**Central University of Rajasthan  
Financial Bid**

**Supply & Installation of Furniture for VC Secretariat at new Administration Building**

<b>Name of Work: Supply and installation of Furniture for VC Secretariat at new administration building, Central University of Rajasthan.</b>							
<b>S. No.</b>	<b>Item</b>	<b>Specifications</b>	<b>Qty</b>	<b>Design</b>	<b>Model</b>	<b>Rate</b>	<b>Amount</b>
1	Executive Desk	(a) Table made as per design. (b) 1 mm laminate pasted on 19 mm thick. Water proof block board both side. (c) Edge protected with wooden leaping with polish finish. (d) Ball bearing drawer channel for the desk. (e) 100 mm handle as per approved design. (f) 2 wire holes for cable entries for electronic equipments.	1	<i>See Annexure 1</i>	N.A.		
2	Executive Chair High Back Revolving Chair	(a) Providing and placing in position very high back Chair. (b) The seat and back are made up artificial leather with high density cushion. The seat and back of chair should be made in single piece fully upholstered in artificial leather in all sides of seat and back rest. (c) The overall dimension of chair should be width 730-810 mm, depth 700-760 mm, and height 1250-1380mm. (d) The seat dimensions should be - width- 480-500 mm, depth-485-510mm, and height-530-555 mm. (e) The chair has 360 degree revolving type, front pivot synchro tilt mechanism, 5-position locking with anti-shock back mechanism. (f) The HR polyurethane foam is moulded with density 45+/-2 kg/m cube and hardness load 20+/-2 kgf. (g) Gas lift should allow 80 mm of height adjustment. Armrest should be bending polished aluminium structure, and sponge lining.	1	<i>As per the model picture</i>			



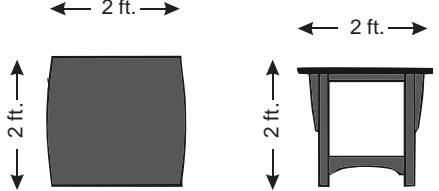
**Central University of Rajasthan**  
**Financial Bid**

**Supply & Installation of Furniture for VC Secretariat at new Administration Building**

		<p>(h) The pedestal should be made of polished aluminium alloy with chrome finished. It is fitted with 5nos. twin wheel castors. The pedestal is 67.0 cm pitch-center dia (77.0 cm with castor).</p> <p>(i) The twin wheel castors are injection moulded in Black Nylon.</p>					
3	Visitors' chairs	<p>(a) Providing and placing in position mid-back chair</p> <p>(b) The seat and back are made up leather with high density cushion. The seat and back of chair should be made in single piece fully upholstered in rexine in all sides of seat, back and armrest.</p> <p>(c) The overall dimension of chair should be width 730-810 mm, depth 700-760 mm, and height 1250-1290mm.</p> <p>(d) The seat dimensions should be – width- 480-500mm, depth-485-510 mm, height-530-525mm.</p> <p>(e) The chair has 360 degree Revolving type, front pivot synchro-tilt mechanism, 5-position locking with anti-shock back mechanism.</p> <p>(f) The HR Polyurethane foam is moulded with density 45+/-2 kg/m cube and hardness load 20+/-2 kgf.</p> <p>(g) Gas lift should allow 80 mm of height adjustment. Armrest should be bending polished aluminium structure.</p> <p>(h) The pedestal should be made of polished aluminium alloy with chrome finished. It is fitted with 5nos. twin wheel castors. The pedestal is 67.0cm pitch-centerdia (77.0 cm with castor). The twin wheel castors are injection moulded in Black Nylon.</p>	5 + 6	<i>As per the model picture</i>			

**Central University of Rajasthan  
Financial Bid**

**Supply & Installation of Furniture for VC Secretariat at new Administration Building**

4	Circular table	<p>(a) A 4-ft dia round table with 25mm thick pre-laminated particle board top</p> <p>(b) Should contain two VAULT power data units and a cherry base</p> <p>(c) Catalyzed polyurethane finishing</p> <p>(d) Base type: Truncated Drum</p>	1	<i>As per the model picture</i>			
5	Sofa seating (3 + 1 + 1 seater)	<p><u>1-seater:</u> 3'-0"x2'-9" (2 nos.)</p> <p><u>3-seater:</u> 6'-3"x2'-9" (1 no.)</p> <p>(a) Providing sofa with basic framework made in cheer wood structure.</p> <p>(b) The base for sofa cushions to be made 50 mm foam. This layer in turn shall be finished with A-class Leather.</p> <p>(c) The front legs of the sofa to be made up of chrome finished pipe, both the legs to have nylon shoes fixed on base for levelling.</p> <p>(d) The back of the sofa shall be made up of frame work of cheer wood with covering of Flexi Polyurethane foam so as to form a thickness of not more than 4" duly covered with foam on all sides of back rest and side hand rest and finished with approved.</p> <p>(e) The sofa shall be as per image.</p>	1	<i>As per the model picture</i>			
6	Side table	<p>(a) Table made as per design</p> <p>(b) Providing Corner Table of minimum size: 2'(L) × 2'(B) × 2' (H) in 19 mm ply board finished in veneer (Duro/Uniply make) of sober color, make and texture (polished in matte melamine finish).</p>	2	<i>As per the model design</i>			






**Central University of Rajasthan**  
**Financial Bid**

**Supply & Installation of Furniture for VC Secretariat at new Administration Building**

7	TV Console/cabinet	(a) Cabinet made as per design. (b) 1mm laminate pasted on 19 mm thick. Water proof block board both side. (c) Edge protected with wooden leaping finish with polish finish. (d) Concealed soft close hinges for cabinet doors. 100mm handle as per approved design.	1	<i>See Annexure 2</i>			
8	Cabinet work against the side wall	(a) Cabinet made as per design. (b) 1mm laminate pasted on 19 mm thick. Water proof block board both side. (c) Edge protected with wooden leaping finish with polish finish. (d) Concealed soft close hinges for cabinet doors. (e) 100mm handle as per approved design. (f) Ball bearing drawer channel for the desk. (g) 5mm clear glass hold with the beading for the tall unit shutter.	1	<i>See Annexure 3</i>			
9	Cabinet work behind the VC executive chair	(a) Cabinet made as per design. (b) 1mm laminate pasted on 19 mm thick. Water proof block board both side. (c) Edge protected with wooden leaping finish with polish finish. (d) Concealed soft close hinges for cabinet doors. (e) 100mm handle as per approved design.	1	<i>See Annexure 4</i>			
10	Wooden dewan/bed	(a) The single bed will be of 915 x 1980 mm (mattress size) made up of 18 mm pre-laminated particle board. (b) The assembling of the bed will be with fastening dub sets for enhanced stability and support. (c) All the wood joints are joined with adhesive and the	1	<i>As per the model picture</i>			



**Central University of Rajasthan  
Financial Bid**

**Supply & Installation of Furniture for VC Secretariat at new Administration Building**

		<p>adhesive is water resistant.</p> <p>(d) The top ply is 12 mm MR Grade ply or Durion and the bottom will be of green plymedium density fibre panel max board of 8mm that goes a through density testing carried out by state of art European testing machines utilizing X-ray technology. There will be additional wooden support in between the compartments for the support of the top ply. The shade will be medium walnut brown non-water based stain polish with melamine finish for longer life and smooth finish. The beds will be made in such a manner that if two beds can be joined together to make one double bed with no gap in between the beds.</p>					
11	Study table	<p>(a) Table made as per design.</p> <p>(b) Made of with 18mm Pre-laminated particle Edge protected with PVC edge bend tape.</p> <p>(c) Ball bearing drawers channel for the desk.</p> <p>(d) 100 mm handle as per approved design</p>	1	<i>As per the model picture</i>			
12	Side table	<p>(a) Dim: 1.5 ft L × 3 ft B × 3 ft H</p> <p>(b) 1 mm laminate pasted on 19 mm th. Water proof block board both side.</p> <p>(c) Edge protected with wooden leaping finish with polish finish.</p>	2	<i>As per the model picture</i>			
<b>Conference room</b>							
13	Wall Panelling	<p>(a) Acoustic wooden wall panelling work for approximate 100 sq.m. with a provision of wire hole for audio/video systems.</p>		At least three designs should be provided by the vendor with sq.ft. Prices.			


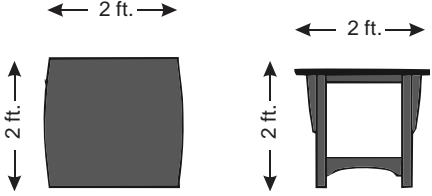
**Central University of Rajasthan  
Financial Bid**

**Supply & Installation of Furniture for VC Secretariat at new Administration Building**

14	Chairs	<p>(a) Providing and placing in position mid-back chair</p> <p>(b) The seat and back are made up leather with high density cushion. The seat and back of chair should be made in single piece fully upholstered in rexine in all sides of seat, back and armrest.</p> <p>(c) The overall dimension of chair should be width 730-810 mm, depth 700-760 mm, and height 1250-1290 mm.</p> <p>(d) The seat dimensions should be – width- 480-500mm, depth-485-510 mm, height-530-525mm.</p> <p>(e) The chair has 360 degree Revolving type, front pivot synchro-tilt mechanism, 5-position locking with anti-shock back mechanism. Gas lift should allow 80 mm of height adjustment. Armrest should be bending polished aluminium structure.</p>	44	<i>As per the model picture</i>			
15	U-Table	<p>(a) Table made as per design</p> <p>(b) 1 mm laminate pasted on 19 mm thick. Water proof block board both side.</p> <p>(c) Edge protected with wooden leaping finish with polish finish.</p> <p>(d) Wire holes for cable entries.</p>	01	<i>See Annexure 5</i>	N.A.		
16	Table for PA with side table	<p>(a) Table made as per design.</p> <p>(b) Made of with 18mm thick Pre-laminated particle board.</p> <p>(c) Edge protected with PVC edge bend tape.</p> <p>(d) 1 wire hole with cable entries.</p> <p>(e) Cabinet made as per design.</p> <p>(f) Concealed soft close hinges for cabinet doors.</p> <p>(g) 100mm handle as per approved design.</p>	01	<i>See Annexure 6 and 6a and model picture</i>			



**Central University of Rajasthan  
Financial Bid**

**Supply & Installation of Furniture for VC Secretariat at new Administration Building**

17	Side Table	<p>(a) Cabinet made as per design.                  (b) 18mm thick pre-laminated particle board.                  (c) Edge with PVC leaping.                  (d) Concealed soft close hinges for cabinet doors.                  (e) 100mm handle as per approved design.                  (f) 18mm pre-laminated board wooden doors</p>	01	See Annexure 7 and model picture	N.A.		
<b>Lounge</b>							
18	3-seater sofa	<p><u>3-seater</u>: 6'-3"×2'-9" (2 no.)</p> <p>(a) Providing sofa with basic framework made in cheer wood structure.                  (b) The base for sofa cushions to be made 50 mm foam This layer in turn shall be finished with A-class Leather.                  (c) The front legs of the sofa to be made up of chrome finished pipe, both the legs to have nylon shoes fixed on base for levelling.                  (d) The back of the sofa shall be made up of frame work of cheer wood with covering of Flexi Polyurethane foam so as to form a thickness of not more than 4" duly covered with foam on all sides of back rest and side hand rest and finished with approved.                  (e) The sofa shall be as per image</p>	2	As per the model picture			
19	Side table (24" × 24")	<p>(a) Table made as per design                  (b) Providing Corner Table of minimum size                  (c) Size: 2' (L) × 2'(B) × 2' (H) in 19 mm ply board finished in veneer (Duro/Uniply make) of sober color, make and texture (polished in matte melamine) finish.</p>	2	As per the model design			



**Central University of Rajasthan  
Financial Bid**

**Supply & Installation of Furniture for VC Secretariat at new Administration Building**

<b>VC's secretariat</b>							
20	Office table	(a) Table made as per design (b) 1mm laminate pasted on 19 mm thick. Water proof block board both side. (c) Edge protected with wooden leaping finish with polish finish. (d) Ball bearing drawer channel for the desk. (e) 100 mm handle as per approved design. (f) 1 wire hole for cable entries. (g) 18 mm pre-laminated board wooden doors	2	<i>See Annexure 8 and model picture</i>			
21	Side Cabinet	(a) Cabinet made as per design. (b) 1mm laminate pasted on 19mm th. Water proof block board both side. (c) Edge protected with wooden leaping finish with polish finish. (d) Concealed soft close hinges for cabinet doors. (e) 100mm handle as per approved design.	1	<i>See annexure 9 and model picture</i>			
22	Cabinet	(a) Cabinet made as per design. (b) 1mm laminate pasted on 19mm th. Water proof block board both side. (c) Edge protected with wooden leaping finish with polish finish. (d) Concealed soft close hinges for cabinet doors. (e) 100mm handle as per approved design.	1	<i>See annexure 10 and model picture</i>	N.A.		



**Central University of Rajasthan  
Financial Bid**

**Supply & Installation of Furniture for VC Secretariat at new Administration Building**

23	Office table	<ul style="list-style-type: none"> <li>(a) Size: As indicated in design</li> <li>(b) Table made as per design 18 mm thick, pre-laminated particle board.</li> <li>(c) Edge protected with PVC edge bend tape.</li> <li>(d) Ball bearing drawer channel for the desk.</li> <li>(e) 100mm handle as per approved design.</li> <li>(f) 1 wire hole for cable entries.</li> </ul>	01	<i>See Annexure 11 and model picture</i>			
24	Work station	<ul style="list-style-type: none"> <li>(a) Table made as per design</li> <li>(b) 1mm laminate pasted on 19mm th. Water proof block board both side.</li> <li>(c) Edge protected with wooden leaping finish with polish finish.</li> <li>(d) 2 wire hole for cable entries.</li> </ul>	01	<i>See Annexure 12</i>	N.A.		
25	File cabinet (wall mounted)	<ul style="list-style-type: none"> <li>(a) 1.5 ft × 3 ft × 2 ft height.</li> <li>(b) Cabinet with two door made as per design.</li> <li>(c) 18mm MFC glue and dowel construction with no visible fixings 8mm solid back panels for extra rigidity</li> <li>(d) Edge with PVC leaping.</li> <li>(e) Drilled-in shelf supports with anti-tip feature and adjustable shelf positions</li> <li>(f) Concealed wall fixing brackets, with 60-70 kg loading per pair, which are wall locking for safety.</li> <li>(g) Concealed soft close hinges for cabinet doors.</li> <li>(h) 100 mm handle as per approved design.</li> </ul>	08	<i>See model picture</i>			


**Central University of Rajasthan  
Financial Bid**

**Supply & Installation of Furniture for VC Secretariat at new Administration Building**

26	Staff Chair	<p>(a) Providing and placing in position mid-back chair</p> <p>(b) The seat and back are made up leather with high density cushion. The seat and back of chair should be made in single piece fully upholstered in rexine in all sides of seat, back and armrest.</p> <p>(c) The overall dimension of chair should be width 730-810 mm, depth 700-760 mm, and height 1250- 1290 mm.</p> <p>(d) The seat dimensions should be – width- 480-500mm, depth-485-510 mm, height-530-525mm.</p> <p>(e) The chair has 360 degree Revolving type, front pivot synchro-tilt mechanism, 5-position locking with anti-shock back mechanism.</p> <p>(f) The HR Polyurethane foam is moulded with density 45+/-2 kg/m cube and hardness load 20+/-2 kgf.</p> <p>(g) Gas lift should allow 80 mm of height adjustment. Armrest should be bending polished aluminium structure.</p> <p>(h) The pedestal should be made of polished aluminium alloy with chrome finished. It is fitted with 5nos. twin wheel castors. The pedestal is 67.0cm pitch-centerdia (77.0 cm with castor). The twin wheel castors are injection moulded in Black Nylon.</p>	05	<i>As per the model picture</i>			
27	Visitor's chair (for VC secretariat)	<p>(a) The office visitor chair features a black powder-coated frame with padded seat and back.</p> <p>(b) It should come with a rounded back.</p> <p>(c) Weight loading capacity: 110 kg.</p>	06	<i>As per model picture</i>			
28	Sofa seating (3-seater)	<p><u>3-seater: 6'-3"x2'-9"</u> (1 no.)</p> <p>(a) Providing sofa with basic framework made in cheer</p>	1	<i>As per the model picture</i>			

**Central University of Rajasthan  
Financial Bid**

**Supply & Installation of Furniture for VC Secretariat at new Administration Building**

		<p>wood structure.</p> <p>(b) The base for sofa cushions to be made 50 mm foam This layer in turn shall be finished with A-class Leather.</p> <p>(c) The front legs of the sofa to be made up of chrome finished pipe, both the legs to have nylon shoes fixed on base for levelling.</p> <p>(d) The back of the sofa shall be made up of frame work of cheer wood with covering of Flexi Polyurethane foam so as to form a thickness of not more than 4” duly covered with foam on all sides of back rest and side hand rest and finished with approved.</p> <p>(e) The sofa shall be as per image</p>					
29	Side table (24" × 24" )	<p>(a) Table made as per design.</p> <p>(b) Providing Corner Table of minimum size</p> <p>(c) Size: 2' (L) × 2'(B) × 2' (H) in 19 mm ply board finished in veneer (Duro/Uniply make) of sober color, make and texture (polished in matte melamine finish).</p>	1	<i>As per the model design</i>	